

RESOLUTION OF THE  
RESOURCES AND DEVELOPMENT COMMITTEE  
23<sup>rd</sup> Navajo Nation Council --- Third Year, 2017

AN ACTION

RELATING TO RESOURCES AND DEVELOPMENT; REQUESTING THE BUREAU OF INDIAN AFFAIRS BRANCH OF ROADS AND THE NAVAJO DIVISION OF TRANSPORTATION ADD TO THE NAVAJO NATION TRIBAL TRANSPORTATION IMPROVEMENT PROGRAM IN FISCAL YEAR 2018 THE N8066(3)/N8065(1) 1, 2, 4 PROJECT SCOPE OF WORK AND THE PRELIMINARY ENGINEERING ACTIVITIES FOR THE BLACK MESA CHAPTER PARKING LOT, ACCESS ROAD AND N8065, 8066 PAVING

BE IT ENACTED:

SECTION ONE. AUTHORITY

The Resources and Development Committee has oversight over roads on the Navajo Nation and the Division of Transportation. 2 N.N.C. §§500(C), 501(B)(2)(g).

SECTION TWO. FINDINGS

A. The Black Mesa Chapter requested the inclusion of access roads and entrance in to both the Black Mesa Community School and Chapter House in Chapter Resolution BMC-16-02-057 on February 12, 2016.

B. Black Mesa Chapter House is one of two chapters on the Navajo Nation that do not have paved access roads.

C. The parking lot and access road to the Black Mesa Chapter House becomes difficult to traverse during periods of inclement weather.

D. It is in the best interest of the Navajo Nation that the improvements requested by the Black Mesa Chapter to the access roads to the Chapter House and School as found at **Exhibit "A"** be made.

**SECTION THREE. APPROVAL**

The Resources and Development Committee of the Navajo Nation Council hereby approves addition to the Navajo Nation Tribal Transportation Improvement Program for Fiscal Year 2018 the N8066(3)/N8065(1) 1, 2, 4 project scope of work the preliminary engineering activities for the Black Mesa Chapter parking lot, access road and N8065/N8066 paving as found at **Exhibit "A"**.

**CERTIFICATION**

I, hereby certify that the following resolution was duly considered by the Resources and Development Committee of the 23<sup>rd</sup> Navajo Nation Council at a duly called meeting at Black Mesa Chapter House, Black Mesa, Navajo Nation (Arizona), at which a quorum was present and that same was passed by a vote of 3 in favor, 0 opposed, 1 abstained on this 11th day of July, 2017.



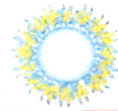
Alton Joe Shepherd, Chairperson  
Resources and Development Committee  
of the 23<sup>rd</sup> Navajo Nation Council

Motion: Honorable Benjamin Bennett  
Second: Honorable Jonathan Perry



# BLACK MESA CHAPTER

P. O. Box 189 \* Pinon, Arizona 86510



## RESOLUTION OF THE BLACK MESA (Kits'ili) CHAPTER BMC-17-07-118



RESPECTFULLY REQUESTING THE RESOURCES AND DEVELOPMENT COMMITTEE OF THE NAVAJO NATION COUNCIL AND THE NAVAJO DIVISION OF TRANSPORTATION TO INCLUDE (AS AN ADDENDUM) THE BLACK MESA CHAPTER PARKING LOT AND ACCESS ROAD PAVING INTO THE N8066(3)/N8065(1)1,2,4 PROJECT SCOPE OF WORK TO THE EXISTING PROJECT AND TO SCHEDULE PRELIMINARY ENGINEERING FUNDS IN THE NAVAJO NATION TRIBAL TRANSPORTATION IMPROVEMENT PROGRAM (NNTTIP) IN FISCAL YEAR 2018.

### WHEREAS:

1. Pursuant to Navajo Nation Council resolution CAP034-98 Navajo Nation Code Title 26, Navajo Nation Local Governance Act. The Black Mesa Chapter Government is officially certified: Thereby delegated Governmental authority with respect to local matters; and
2. The Black Mesa Chapter is requesting improvement of the Chapter parking lot and an access road to be constructed of paved asphalt, the constituents need an all-weather access to the Chapter to conduct their business and/or attend meetings; and
3. The parking lot and access road to the Black Mesa Chapter House is difficult to traverse during inclement weather, presently, the Black Mesa Chapter is one of only two Navajo Chapters that do not have paved access; and
4. The recent field assessment meeting with BIA and NDOT determined a need to move the water well to a different location to make ample room for the proposed parking lot, which the Chapter has acknowledged and agreed to; and
5. The meeting also revealed that there will be considerable leveling including building up the existing uneven areas for which dirt material is readily available from within the Chapter boundaries; and
6. Additionally, the existing east Chapter boundary fencing will be removed and replaced with new fencing; and
7. Upon completion of construction, the Black Mesa Chapter will provide maintenance and up-keep of the proposed sidewalk and parking lot; and
8. Navajo Region BIA estimates that the preliminary engineering to include chapter access road and parking lot will cost around \$25,000; and



**NOW THEREFORE BE IT RESOLVED THAT:**

1. The Black Mesa Chapter is requesting the Resources and Development Committee of the Navajo Nation Council and the Navajo Division of Transportation to include paving of the chapter access road and parking lot in the N8066(3)/N8065(1)1,2,4 project of the Navajo Nation Tribal Transportation Improvement Program (NNTTIP).
2. The Black Mesa Chapter is requesting that \$25,000 be scheduled for preliminary engineering in the 2018 NNTTIP.

**CERTIFICATION**

We hereby certify that the foregoing resolution was duly considered at the Black Mesa Chapter in Black Mesa, Navajo Nation, Arizona at a duly called meeting at which a quorum was present and that same was passed by a vote of 13 in favor, 00 opposed and 03 abstained on this 7<sup>th</sup> day of July 2017.

Motion by: Dorothy R. Yazzie  
Seconded by: Albert Lee

Marvin Yellowhair  
Marvin Yellowhair, Chapter President

Caroline Bemore  
Caroline Bemore, Chapter Vice President

Marlene Biltah  
Marlene Biltah, Chapter Secretary/Treasurer

Dwight Witherspoon  
Dwight Witherspoon, Council Delegate



MARVIN YELLOWHAIR  
CHAPTER PRESIDENT

CAROLINE BEMORF  
CHAPTER VICE PRESIDENT

MARLENE HULTAH  
CHAPTER SECRETARY/TREASURER



DWIGHT WITHERSPOON  
COUNCIL DELEGATE

FRANCIS HONIE  
GRAZING COMMITTEE MEMBER

ALBERT LEE  
COMMUNITY SERVICE COORDINATOR

**RESOLUTION OF THE  
BLACK MESA (Kits'ili) CHAPTER**

**BMC-17-04-082**

**REQUEST FOR CONSIDERATION FOR APPROPRIATION FROM THE FEDERAL  
EXCISE TAX (FET) FUNDS TO USE FOR CONSTRUCTION OF AN ACCESS ROAD  
AND THE BLACK MESA CHAPTER PARKING LOT.**

**WHEREAS:**

1. The Black Mesa Chapter, pursuant to the "Local Governance Act," 26 N.N.C., Chapter 1, Sub-Chapter 1, Section 3 (a) the Black Mesa Chapter is a recognized local Chapter Government as promulgated by Navajo Nation Council Resolution No. CAP 34-98; and
2. Pursuant to Chapter 1, Section 131 (1) (2) of the same "Act," the Chapter has the responsibility and authority to promote, protect, and preserve the interest and general welfare of its community, people and programs; and
3. The Black Mesa Chapter presently does not have paved access road and parking lot which creates mobility challenges for all travelers attempting to get to the Chapter house especially navigating thru mud and snow; and
4. The Black Mesa Community constituents make frequent commute to the chapter for services and supplies; and
5. The Black Mesa Chapter requests an approval of an appropriation to fund an access road to the Black Mesa Chapter as well as to pave the Chapter parking lot.

**NOW THEREFORE BE IT FURTHER RESOLVED THAT:**

**THE BLACK MESA CHAPTER RESPECTFULLY REQUESTS FOR  
CONSIDERATION AND APPROVAL FOR APPROPRIATION FROM THE FEDERAL  
EXCISE TAX FUNDS TO USE FOR CONSTRUCTION OF A CHAPTER ACCESS  
ROAD AND PAVEMENT OF THE CHAPTER HOUSE PARKING LOT.**

BMC-17-04-082

### CERTIFICATION

We hereby certify that the foregoing resolution was fully considered by the Black Mesa Chapter at a duly called meeting at Black Mesa, Arizona at which a quorum was present and that same was passed by a vote of 22 in favor, 00 opposed, and 00 abstained, on this 13<sup>th</sup> day of April, 2017.

Motioned by: Joseph Redhair

Seconded by: Ella Tallis

  
Marvin Yellowhair, President

  
Caroline Bemore, Vice President

  
Marlene Biltah, Secretary/Treasurer

  
Dwight Witherspoon, Council Delegate

MARVIN YELLOWHAIK  
CHAPTER PRESIDENT

CAROLINE BEMORF  
CHAPTER VICE PRESIDENT

MARLENE BILTAH  
CHAPTER SECRETARY/TREASURER



DWIGHT WITHERSPOON  
COUNCIL DELEGATE

FRANCIS HONIE  
GRAZING COMMITTEE MEMBER

ALBERT LEL  
COMMUNITY SERVICE COORDINATOR

## RESOLUTION OF THE BLACK MESA (Kits'ihili) CHAPTER

BMC-17-04-086

**REQUESTING THE BLACK MESA COMMUNITY SCHOOL TO OFFICIALLY  
RELINQUISH A PART OF LANDS DESIGNATED AS SCHOOL PROPERTY  
FOR USE AS RIGHT-OF-WAY FOR CONSTRUCTION OF N-8066 TO THE  
SCHOOL.**

### WHEREAS:

1. The Black Mesa Chapter, pursuant to the "Local Governance Act," 26 N.N.C., Chapter 1, Sub-Chapter 1, Section 3 (a) the Black Mesa Chapter is a recognized local Chapter Government as promulgated by Navajo Nation Council Resolution No. CAP 34-98; and
2. Pursuant to Chapter 1, Section 131 (1) (2) of the same "Act," the Chapter has the responsibility and authority to promote, protect, and preserve the interest and general welfare of its community, people and programs; and
3. The Black Mesa Chapter community and The Black Mesa Community School are in agreement that the complete construction of N-8066 to the school will benefit both parties; and
4. At the meetings where representatives from both parties were present, it was emphasized by both Bureau of Indian Affairs (BIA) Roads Department and Navajo Division of Transportation (NDOT) that the design of the proposed road requires that the School relinquish a portion of its land to be used for the Right-of-Way; and
5. The Black Mesa Chapter is requesting that The Black Mesa Community School expedite work with appropriate parties to achieve this relinquishment of land.

### NOW THEREFORE BE IT FURTHER RESOLVED THAT:

**THE BLACK MESA CHAPTER RESPECTFULLY REQUESTS OF THE BLACK  
MESA COMMUNITY SCHOOL TO WORK ON AND COMPLETE THE  
OFFICIAL RELINQUISHMENT OF SAID SCHOOL PROPERTY TO USE AS  
RIGHT-OF-WAY FOR THE CONSTRUCTION OF N-8066 TO THE SCHOOL.**



BMC-17-04-086

**CERTIFICATION**

We hereby certify that the foregoing resolution was fully considered by the Black Mesa Chapter at a duly called meeting at Black Mesa, Arizona at which a quorum was present and that same was passed by a vote of 22 in favor, 00 opposed, and 00 abstained, on this 13<sup>th</sup> day of April, 2017.

Motioned by: Victor Yellowhair

Seconded by: Larry Biltah

  
Marvin Yellowhair, President

  
Caroline Bemore, Vice President

  
Marlene Biltah, Secretary/Treasurer

  
Dwight Witherspoon, Council Delegate

MARVIN YELLOWHAIK  
CHAPTER PRESIDENT

CAROLINE DEMORE  
CHAPTER VICE PRESIDENT

MARLENE BILTAH  
CHAPTER SECRETARY/TREASURER



DWIGHT WITHERSPON  
COUNCIL DELEGATE

FRANCIS HONIE  
GRAZING COMMITTEE MEMBER

ALBERT LEE  
COMMUNITY SERVICE COORDINATOR

**RESOLUTION OF THE  
BLACK MESA (Kits'illi) CHAPTER**

**BMC-17-04-088**

**REQUESTING NAVAJO DIVISION OF TRANSPORTATION TO EXPEDITE THE  
ARCHEOLOGICAL CLEARANCE REPORT FOR THE TWO BRIDGES EXTENDING  
OFF N-8086.**

**WHEREAS:**

1. The Black Mesa Chapter, pursuant to the "Local Governance Act," 26 N.N.C., Chapter 1, Sub-Chapter 1, Section 3 (a) the Black Mesa Chapter is a recognized local Chapter Government as promulgated by Navajo Nation Council Resolution No. CAP 34-98; and
2. Pursuant to Chapter 1, Section 131 (1) (2) of the same "Act," the Chapter has the responsibility and authority to promote, protect, and preserve the interest and general welfare of its community, programs, and the people; and
3. The Black Mesa Chapter, being the only Navajo Chapter without paved access is working with other entities in trying to initiate and/or process key documents; and
4. The Black Mesa Chapter and the local Community School are hard to access when inclement weather sets in making it difficult for school buses, parents and family members to transport the children; and
5. The Black Mesa resident elderlies and all local travelers cannot access their destination in a timely manner because of mud and icy roads; and
6. The completion of the proposed paving of N-8066 from end of pavement (EOP) including completions of the two bridges would significantly help the school and the community people in their travels during inclement weather.

**NOW THEREFORE BE IT FURTHER RESOLVED THAT:**

**THE BLACK MESA RESPECTFULLY REQUESTS THE NAVAJO DIVISION OF  
TRANSPORTATION TO EXPEDITE THE ARCHEOLOGICAL CLEARANCE  
REPORT FOR THE TWO BRIDGES EXTENDING OFF N-8066.**

BMC-17-04-088

**CERTIFICATION**

We hereby certify that the foregoing resolution was fully considered by the Black Mesa Chapter at a duly called meeting at Black Mesa, Arizona at which a quorum was present and that same was passed by a vote of 22 in favor, 00 opposed, and 00 abstained, on this 13<sup>th</sup> day of April, 2017.

Motioned by: Victor Yellowhair

Seconded by: Ella Tallis

  
Marvin Yellowhair, President

  
Caroline Bemore, Vice President

  
Marlene Biltah, Secretary/Treasurer

\_\_\_\_\_  
Dwight Witherspoon, Council Delegate



MARVIN YELLOWTAIL  
CHAPTER PRESIDENT

CAROLINE BEMORF  
CHAPTER VICE PRESIDENT

MARLENE BULTARI  
CHAPTER SECRETARY/TREASURER



DWIGHT WITHERSPOON  
COUNCIL DELEGATE

FRANCIS HONIE  
GRAZING COMMITTEE MEMBER

ALBERT LEE  
COMMUNITY SERVICE COORDINATOR

**RESOLUTION OF THE  
BLACK MESA (Kits'ili) CHAPTER**

**BMC-17-04-089**

**REQUESTING THE NAVAJO DIVISION OF TRANSPORTATION (NDOT)  
DIVISION DIRECTOR TO PRESENT A WRITTEN STATUS REPORT OF ALL  
ROAD PROJECTS RELATED TO N-8066 AND N-8065.**

**WHEREAS:**

- 1. The Black Mesa Chapter, pursuant to the "Local Governance Act," 26 N.N.C., Chapter 1, Sub-Chapter 1, Section 3 (a) the Black Mesa Chapter is a recognized local Chapter Government as promulgated by Navajo Nation Council Resolution No. CAP 34-98; and**
- 2. Pursuant to Chapter 1, Section 131 (1) (2) of the same "Act," the Chapter has the responsibility and authority to promote, protect, and preserve the interest and general welfare of its community, people and programs; and**
- 3. The Black Mesa Chapter has road projects related to N-8066 and N-8065 that are pending completion; and**
- 4. The Black Mesa Chapter community are anxious to hear the status of these projects and their projected completion; and**
- 5. The Black Mesa Chapter requests a written as well as an oral report to the community from NDOT executive office on the status of all road projects relevant to N-8066 and N-8065.**

**NOW THEREFORE BE IT FURTHER RESOLVED THAT:**

**THE BLACK MESA CHAPTER RESPECTFULLY REQUESTS A WRITTEN  
AND AN ORAL REPORT FROM THE EXECUTIVE DIRECTOR OF NAVAJO  
DIVISION OF TRANSPORTATION ON THE STATUS OF ALL ROAD  
PROJECTS RELEVANT TO N-8066 AND N-8065 IN THE BLACK MESA  
COMMUNITY.**

BMC-17-04-089

**CERTIFICATION**

We hereby certify that the foregoing resolution was fully considered by the Black Mesa Chapter at a duly called meeting at Black Mesa, Arizona at which a quorum was present and that same was passed by a vote of 19 in favor, 00 opposed, and 03 abstained, on this 13<sup>th</sup> day of April, 2017.

Motioned by: Victor Yellowhair

Seconded by: Annie Bemore

  
Marvin Yellowhair, President

  
Caroline Bemore, Vice President

  
Marlene Biltah, Secretary/Treasurer

\_\_\_\_\_  
Dwight Witherspoon, Council Delegate

## **Black Mesa (Kits'iili) Chapter**

P.O. Box 189 \* Pinon, AZ 86510

(928) 675-0009

### **RESOLUTION OF THE BLACK MESA (Kits'iili) CHAPTER**

BMC-16-02-057

REQUESTING THE BUREAU OF INDIAN AFFAIRS, NAVAJO DEPARTMENT OF  
TRANSPORTATION AND RESOURCE AND DEVELOPMENT COMMITTEE AND  
NAVAJO NATION COUNCIL TO INCLUDE THE ACCESS ROADS INTO ENTRANCE  
INTO BOTH BLACK MESA CHAPTER AND BLACK MESA COMMUNITY SCHOOL  
PARKING LOT.

#### **WHEREAS:**

1. Pursuant to Navajo Nation Council Resolution CAP034-98 Navajo Nation Code Title 26, Navajo Nation Local Governance Act. The Black Mesa Chapter Government is officially certified: Thereby delegated Governmental authority with respect to local matters; and
2. Through a meeting with the BIA Roads and NDOT , the chapter learned that entrance into the chapter and school are not included as part of N-8066 Roads construction, it is utmost importance to include both entrance for pavement, and that it be part of N-8066 Roads construction; and
3. It is in the best interest of membership of the chapter and students that both entrance be made part of N-8066 construction priority.

#### **NOW, THEREFORE BE IT RESOLVED THAT:**

1. The Black Mesa Chapter hereby respectfully requests the Resource Development Committee, Navajo Division of Transportation and Bureau of Indian Affairs to include the access roads into both Black Mesa Chapter and Black Mesa Community School, including the parking lot, as part of priority for Phase III N-8066 road construction.
2. The Black Mesa Chapter further requests that all necessary studies, Right of Way and clearance be immediately pursued and appropriate documentation be developed for the above and construction of Phase III N-8066, with the above addendum be immediately pursued.
3. The Black Mesa Chapter hereby gives the permission for grant of entrance.

---

Larry Biltah  
Chapter President

Caroline Bemore  
Chapter Vice-President

Marlene Biltah  
Chapter Secretary/ Treasurer

Francis Honie  
Grazing Committee Member

Dwight Witherspoon  
Council Delegate



**RESOLUTION NO. BMC-16-02-057**

**CERTIFICATION**

We hereby certify that the foregoing resolution was fully considered by the Black Mesa Chapter at a duly called meeting at Black Mesa, Arizona at which a quorum was present and that same was passed by a vote of 16 in favor, 00 opposed, and 04 abstained, on this 12<sup>th</sup> day of February, 2016.

Motioned by: Daisy Kiyaani

Seconded by: Ruby Todechine

  
\_\_\_\_\_  
Larry Biltah, President

  
\_\_\_\_\_  
Caroline Bemore, Vice President

  
\_\_\_\_\_  
Marlene Biltah, Secretary/Treasurer

  
\_\_\_\_\_  
Dwight Witherspoon, Council Delegate

Box 189

86510

RESOLUTION OF THE  
BLACK MESA (Kits'ili) CHAPTER  
BMC-16-08-142

REQUESTING NAVAJO DIVISION OF TRANSPORTATION (NDOT) TO SCHEDULE AND COMPLETE  
ARCHAEOLOGICAL SURVEY OF ROUTE N8065(1) AND N8066(3) TOWARDS THE ENDING OF PROJECT  
(ORAIBI WASH TO END OF PAVEMENT) AS SOON AS POSSIBLE

**WHEREAS:**

1. Pursuant to Navajo Nation Council Resolution CAP 034-98 Navajo Nation Code Title 26, Navajo Nation Local Governance Act. The Black Mesa Chapter Government is officially certified and delegated governmental authority with respect to local matters; and
2. Navajo Division of Transportation (NDOT) has the primary responsibility for maintenance of roads on the Navajo Nation, also, to provide safe and efficient transportation and public road access to and within the Navajo Reservation including improvement of overall road conditions; AND
3. Black Mesa community members and residents need all-weather access roads (N8065 and N8066) to local surrounding areas which include, but not limited to, Black Mesa Chapter, Black Mesa Community School and NHA Housing when it gets difficult to traverse during periods of inclement weather; AND
4. BIA Navajo Routes N8065 and N8066 are the main arterial roads which the community of Black Mesa utilize as their main access roads to conduct daily business and activities; AND
5. Navajo Regional Bureau of Indian Affairs Division of Transportation (NRO BIA DOT) has updated the drainage analysis and continues to work on updating the design plans but needs the Archaeological Survey of Routes N8065(1) and N8066(3) towards the Ending of Project (Oraibi Wash to End of Pavement) completed before the plans can be finalized and PIH field review can be conducted; AND
6. Navajo Division of Transportation (NDOT) needs to schedule and complete the Archaeological Survey of Routes N8065(1) and N8066(3) towards the Ending of Project (Oraibi Wash to EOP) and submit it to NRO BIA DOT so the design plans can be finalized.

**NOW THEREFORE BE IT RESOLVED THAT:**

Black Mesa Chapter is requesting Navajo Division of Transportation (NDOT) to schedule and complete the Archaeological Survey of Route N8065(1) and N8066(3) towards the Ending of Project (Oraibi Wash To End of Pavement) as soon as possible.


**RESOLUTION NO. BMC-16-08-142**

**CERTIFICATION**

We hereby certify that the foregoing resolution was fully considered by the Black Mesa Chapter at a duly called meeting at Black Mesa, Arizona at which a quorum was present and that same was passed by a vote of 15 in favor, 00 opposed, and 01 abstained, on this 25<sup>th</sup> day of August, 2016.

Motioned by: Dorothy Yazzie

Seconded by: Jane Baloo

  
\_\_\_\_\_  
Larry Biltah, President

  
\_\_\_\_\_  
Caroline Bemore, Vice President

  
\_\_\_\_\_  
Marlene Biltah, Secretary/Treasurer

  
\_\_\_\_\_  
Dwight Witherspoon, Council Delegate



## **Black Mesa (Kits'iili) Chapter**

P. O. Box 189 \* Pinon, AZ 86510

(928) 675-0009

### **RESOLUTION OF THE BLACK MESA (Kits'iili) CHAPTER**

BMC-16-03-060

RESPECTFULLY REQUESTING THE NAVAJO NATION COUNCIL ON RESOURCE AND DEVELOPMENT COMMITTEE, THE B.I.A. ROAD CONSTRUCTION OFFICE, THE NAVAJO NATION DEPARTMENT OF TRANSPORTION FOR A STRONG PREFERENCE ON THE USE OF REGULAR ASPHALT MATERIALS TO COMPLETE CONTRUCTION OF N8066 PHASE 3, THE SAME ASPHALT MATERIALS USED IN THE 1<sup>ST</sup> PHASE CONSTRUCTION OF N8066.

#### **WHEREAS:**

1. The Black Mesa Chapter of the Navajo Nation acts on the resolution pursuant to the authority conferred to the Chapter through Navajo Nation Code Title 26, Chapter I. Section B. Purpose, which states, "Through adoption of this Act, the Navajo Nation Council delegates to Chapters governmental authority with respect to local matters consistent with Navajo Law, including custom and tradition," and
2. The Black Chapter members are appalled of the fact that their Chapter is the only one with no asphalt road excess, and
3. The Black Mesa Chapter members are informed by B.I.A. Road Construction Office of the proposed plans to use double chipped seal with poly emulsion oil on the 3<sup>rd</sup> phase of highway construction of N8066 due to low ADT (Average daily traffic) data and a CHEAP way for construction, and
5. The Black Mesa Chapter members are informed that the regular asphalt material be considered based on the following; Economical – low cost building materials, durable – reliable weather resistant materials, safety – related to smoothness & skid resistance, and recyclable – materials are recyclable or reusable; and
4. Black Mesa Chapter members expressed a strong preference for use of regular asphalt material to complete construction of N8066 3<sup>rd</sup> Phase, same asphalt material used in the 1<sup>st</sup> phase construction of N8066.

#### **NOW THEREFORE BE IT RESOLVED THAT:**

**RESPECTFULLY REQUESTING THE NAVAJO NATION COUNCIL ON RESOURCE AND DEVELOPMENT COMMITTEE, THE B.I.A. ROAD CONSTRUCTION OFFICE, THE NAVAJO NATION DEPARTMENT OF TRANSPORTION THE FOR A STRONG PREFERENCE ON THE USE OF REGULAR ASPHALT MATERIALS TO COMPLETE CONTRUCTION OF N8066 PHASE 3, THE SAME ASPHALT MATERIALS USED IN THE 1<sup>ST</sup> PHASE CONSTRUCTION OF N8066.**

---

Larry Biltah  
Chapter President

Caroline Bemore  
Chapter Vice-President

Marlene Biltah  
Chapter Secretary/ Treasurer

Francis Honie  
Grazing Committee Member

Dwight Witherspoon  
Council Delegate

**RESOLUTION NO. BMC-16-03-060**

**CERTIFICATION**

We hereby certify that the foregoing resolution was fully considered by the Black Mesa Chapter at a duly called meeting at Black Mesa, Arizona at which a quorum was present and that same was passed by a vote of 16 in favor, 00 opposed, and 03 abstained, on this 29<sup>th</sup> day of March, 2016.

Motioned by: Amos Johnson

Seconded by: Helene Yellowhorse

  
\_\_\_\_\_  
Larry Biltah, President

  
\_\_\_\_\_  
Caroline Bemore, Vice President

  
\_\_\_\_\_  
Marlene Biltah, Secretary/Treasurer

  
\_\_\_\_\_  
Dwight Witherspoon, Council Delegate



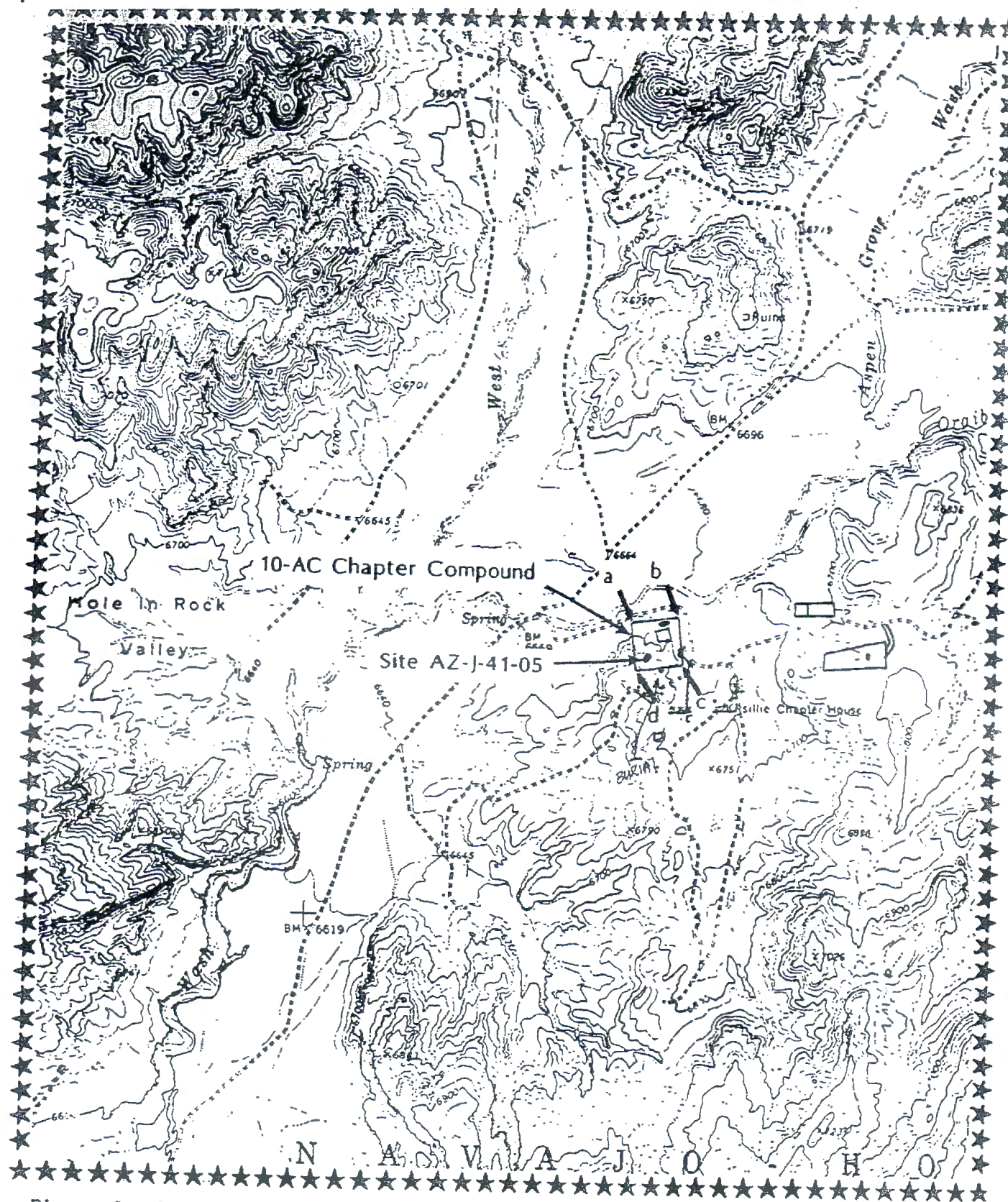


Figure 2. Locational map of the 10-acre Black Mesa Chapter Compound and Site AZ-J-41-05, Navajo County, Arizona. On the USGS map "Hole in the Rock Valley, Arizona" (1968), 7.5' series; T.34N, R.22E, Unplatted. NNAD-93-375.

Deposits Fence

— P —

— P —

Deposits Powerlines

⊙

Deposits Section Corner

o

Deposits 5/6 Re-bar

UNDERGROUND UTILITIES NOT LOCATED..

Survey Data		
SURVEYED BY	W.C.	
DRAWN BY	D.M.T.	
APPROVED BY	J.C.	
FIELD BOOK NO.	249/12	
JOB NUMBER	3439	

**onla****BLACK MESA CHAPTER HOUSE**

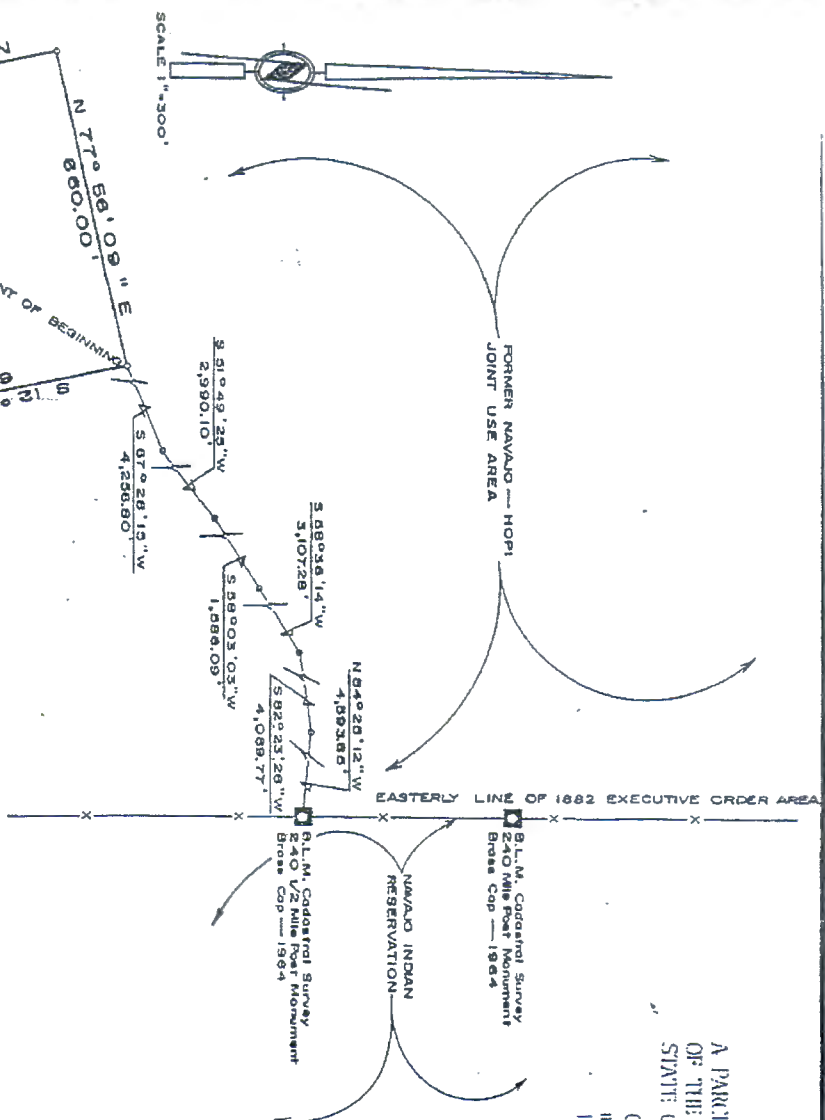
10.00 AC. ±  
DISTRICT 4—NAVAJO INDIAN RESERVATION  
KITZILIE, NAVAJO COUNTY, ARIZONA

Larry Eagleman  
Don Beedy

Exhibit "A"

Being 10.00 acres, more or less, in area, and being subject to any and all existing easements for underground utilities located therein.

Surveyed 11/17/81 by the Office of Navajo Land Development, The Navajo Tribe, Window Rock, Navajo Nation, Arizona.



## TRACT DESCRIPTION

A PARCEL OF LAND SITUATE WITHIN THE LAND MANAGEMENT DISTRICT NO. 4 OF THE NAVAJO INDIAN RESERVATION NEAR KITZILIE, APACHE COUNTY, STATE OF ARIZONA AND BEING MORE PARTICULARLY DESCRIBED AS FOLLOWS:

COMMENCE at the Bureau of Land Management brass cap, 240 1/2 mile post monument situate in the Easterly line of the Executive Order of 1882 Acre;

THENCE run N 84° 25' 12" W, 1,593.85 feet;  
THENCE S 82° 23' 28" W, 4,089.77 feet;  
THENCE S 58° 36' 14" W, 3,107.28 feet;  
THENCE S 58° 03' 03" W, 1,586.09 feet;  
THENCE S 51° 49' 25" W, 2,990.10 feet;  
THENCE S 67° 28' 15" W, 4,256.80 feet to the POINT of BEGINNING of the herein described parcel of land;  
THENCE S 12° 03' 51" E, 660.00 feet;  
THENCE S 77° 56' 09" W, 660.00 feet;  
THENCE N 12° 03' 51" W, 660.00 feet;  
THENCE N 77° 56' 09" E, 660.00 feet to the Point of Beginning.

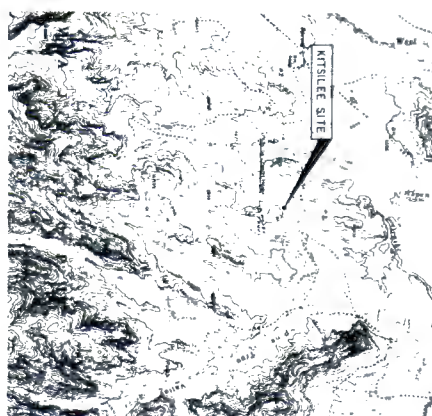




The adoption of the land herein described is with the free consent of Moraga Housing Authority and in accordance with the desires of Utility Agencies thereof, do hereby dedicate the streets to the common use of utilities.

Course	$\Delta$	$\mu$	$T$	$L$
①	24.5/20.0/20.0	23.0/23.0	2.3/1.4	1.0/0.8
②	44.0/30.0/20.0	35.0/30.0	8.1/6.1	3.2/2.7
③	40.0/30.0/20.0	35.0/30.0	7.6/6.0	2.9/2.7
④	39.0/30.0/20.0	35.0/30.0	7.1/6.0	2.8/2.7
⑤	39.0/30.0/20.0	35.0/30.0	7.1/6.0	2.8/2.7
⑥	23.0/20.0/14.0	20.0/20.0	0.7/1.1	0.4/0.2
⑦	23.0/20.0/14.0	20.0/20.0	0.7/1.1	0.4/0.2
⑧	44.0/30.0/20.0	35.0/30.0	8.1/6.1	3.2/2.7
⑨	44.0/30.0/20.0	35.0/30.0	8.1/6.1	3.2/2.7
⑩	44.0/30.0/20.0	35.0/30.0	8.1/6.1	3.2/2.7
⑪	44.0/30.0/20.0	35.0/30.0	8.1/6.1	3.2/2.7
⑫	44.0/30.0/20.0	35.0/30.0	8.1/6.1	3.2/2.7
⑬	44.0/30.0/20.0	35.0/30.0	8.1/6.1	3.2/2.7
⑭	44.0/30.0/20.0	35.0/30.0	8.1/6.1	3.2/2.7
⑮	44.0/30.0/20.0	35.0/30.0	8.1/6.1	3.2/2.7
⑯	44.0/30.0/20.0	35.0/30.0	8.1/6.1	3.2/2.7
⑰	44.0/30.0/20.0	35.0/30.0	8.1/6.1	3.2/2.7
⑱	44.0/30.0/20.0	35.0/30.0	8.1/6.1	3.2/2.7
⑲	44.0/30.0/20.0	35.0/30.0	8.1/6.1	3.2/2.7
⑳	44.0/30.0/20.0	35.0/30.0	8.1/6.1	3.2/2.7
㉑	44.0/30.0/20.0	35.0/30.0	8.1/6.1	3.2/2.7
㉒	44.0/30.0/20.0	35.0/30.0	8.1/6.1	3.2/2.7
㉓	44.0/30.0/20.0	35.0/30.0	8.1/6.1	3.2/2.7
㉔	44.0/30.0/20.0	35.0/30.0	8.1/6.1	3.2/2.7
㉕	44.0/30.0/20.0	35.0/30.0	8.1/6.1	3.2/2.7
㉖	44.0/30.0/20.0	35.0/30.0	8.1/6.1	3.2/2.7
㉗	44.0/30.0/20.0	35.0/30.0	8.1/6.1	3.2/2.7
㉘	44.0/30.0/20.0	35.0/30.0	8.1/6.1	3.2/2.7
㉙	44.0/30.0/20.0	35.0/30.0	8.1/6.1	3.2/2.7
㉚	44.0/30.0/20.0	35.0/30.0	8.1/6.1	3.2/2.7
㉛	44.0/30.0/20.0	35.0/30.0	8.1/6.1	3.2/2.7
㉜	44.0/30.0/20.0	35.0/30.0	8.1/6.1	3.2/2.7
㉝	44.0/30.0/20.0	35.0/30.0	8.1/6.1	3.2/2.7
㉞	44.0/30.0/20.0	35.0/30.0	8.1/6.1	3.2/2.7
㉟	44.0/30.0/20.0	35.0/30.0	8.1/6.1	3.2/2.7
㊱	44.0/30.0/20.0	35.0/30.0	8.1/6.1	3.2/2.7
㊲	44.0/30.0/20.0	35.0/30.0	8.1/6.1	3.2/2.7
㊳	44.0/30.0/20.0	35.0/30.0	8.1/6.1	3.2/2.7
㊴	44.0/30.0/20.0	35.0/30.0	8.1/6.1	3.2/2.7
㊵	44.0/30.0/20.0	35.0/30.0	8.1/6.1	3.2/2.7
㊶	44.0/30.0/20.0	35.0/30.0	8.1/6.1	3.2/2.7
㊷	44.0/30.0/20.0	35.0/30.0	8.1/6.1	3.2/2.7
㊸	44.0/30.0/20.0	35.0/30.0	8.1/6.1	3.2/2.7
㊹	44.0/30.0/20.0	35.0/30.0	8.1/6.1	3.2/2.7
㊺	44.0/30.0/20.0	35.0/30.0	8.1/6.1	3.2/2.7
㊻	44.0/30.0/20.0	35.0/30.0	8.1/6.1	3.2/2.7
㊼	44.0/30.0/20.0	35.0/30.0	8.1/6.1	3.2/2.7
㊽	44.0/30.0/20.0	35.0/30.0	8.1/6.1	3.2/2.7
㊾	44.0/30.0/20.0	35.0/30.0	8.1/6.1	3.2/2.7
㊿	44.0/30.0/20.0	35.0/30.0	8.1/6.1	3.2/2.7

3. M TOP OF CONCRETE COLLAP SOUTH  
 SIDE OF WATER TANK - ELEV 2820.00  
 TANK LOCATED SOUTH OF SITE.  
 DATE: 11/15/03 BY: J. P. ...  
 FIELDING AND ...  
 2501 W. ...  
 SALT LAKE CITY, UT 84115  
 NA 82, N 02, DATE 5  
 THE USE OF DIFFERENT ...  
 4. AFTER ...



**VICINITY MAP**  
**NO SCALE**

### LEGAL DESCRIPTION

[illegible]

226 BLAINE Dwyer      14,000 to 16,000      1800

[illegible]

I, GARY O. Robertson, do hereby certify that the plat shown herein was prepared under my supervision and is true and correct to the best of my knowledge and belief.

Aeri - 62 Kachila

# AS~BUILT

**MOLZEN-CORDIN & Associates**  
CONSULTING ENGINEERS  
ALBUQUERQUE NEW MEXICO

**KRUGER LAKE HUTCHINSON BROWN**  
ARCHITECTS PLANNERS INCORPORATED  
801 SAN PEDRO OR NE SUITE 105  
ALBUQUERQUE, NM 87108 505-265-8452

DRAWING TITLE: PLAT

PROJECT TITLE - NAVAJO HOUSING PROJECT  
KITSILEE, ARIZONA (AZ 12-62)

3

OF 87 SHEETS